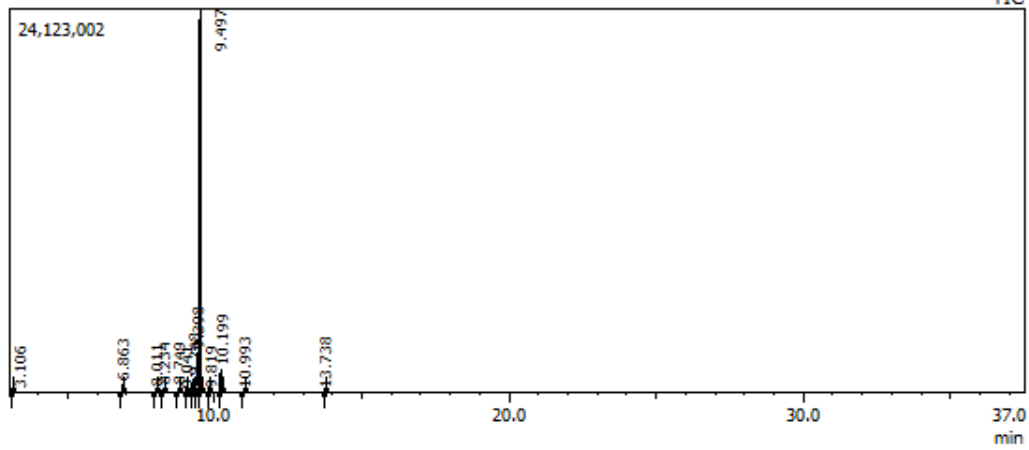


藍膠尤加利 GC/MS 檢驗  
 僅適用於 Alysa 芳療主播品牌

GC-MS Backup\2012\100% Pure Essential Oils\Eucalyptus Globulus\CO Eucalyptus globulus oil ACO-USDA\_1003138\_4



#	R.T.	Area	Area%	Hit%	CAS No.	Name of Best Match
1	3.106	28683	0.03	89	105-57-7	Ethane, 1,1-diethoxy-
2	6.863	1235153	1.45	97	80-56-8	.alpha.-Pinene
3	8.011	338427	0.40	96	18172-67-3	.beta.-Pinene
4	8.234	580223	0.68	95	123-35-3	.beta.-Myrcene
5	8.749	541181	0.64	95	99-83-2	.alpha.-Phellandrene
6	9.041	138899	0.16	94	29050-33-7	(+)-4-Carene
7	9.248	2205835	2.59	97	527-84-4	o-Cymene
8	9.398	7277058	8.55	83	138-86-3	Limonene
9	9.497	68851542	80.85	98	470-82-6	1,8 Cineole
10	9.819	65090	0.08	94	3338-55-4	cis-.beta.-Ocimene
11	10.199	3603134	4.23	97	99-85-4	.gamma.-Terpinene
12	10.993	220236	0.26	95	29050-33-7	(+)-4-Carene
13	13.738	72496	0.09	92	562-74-3	Terpinen-4-ol